

# GateKeeper Deploy

MSI application deployment utility for Windows computers on a network.

GateKeeper Deploy is a utility for seamlessly distributing software to computers on a network. It is used to deploy GateKeeper Client applications to Windows machines on your network.

Key requirements:

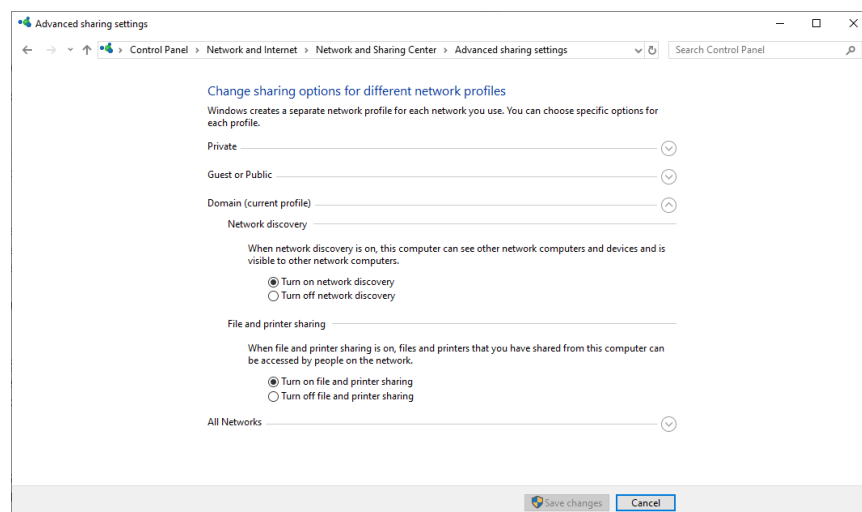
- 1) **File** and **Printer Sharing** must be enabled on all computers
- 2) **Network Discovery** must be enabled on all computers
- 3) The MSI file of the software to be deployed must be saved in a shared drive that is accessible from all the computers
- 4) System Level or credentials that have administrative rights on all the computers

## Background Information:

The GateKeeper Deploy tool uses Microsoft's PSEXec utility to manage software deployment on a network. Other functions include ability to search Active Directory for computers on the network, ping any computer, and to shut down or restart one.

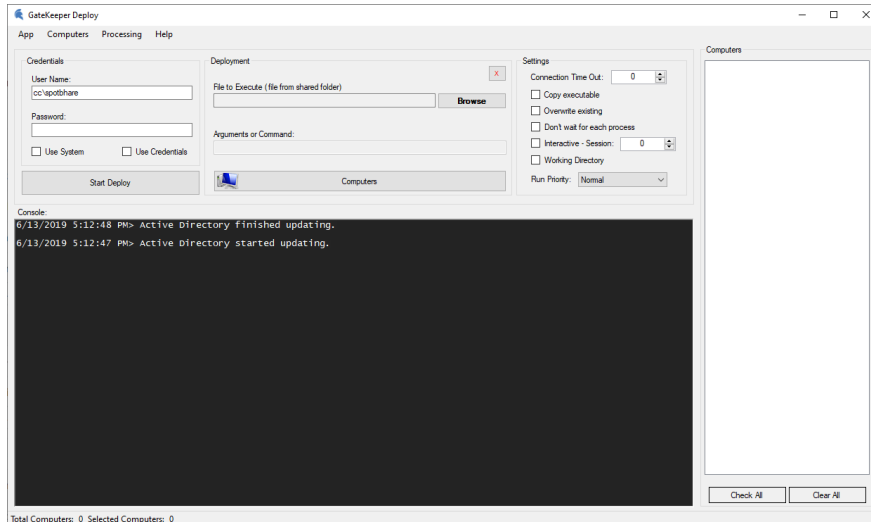
## Enabling Network Discovery and File and Printer Sharing:

1. Go to **Control Panel** → **Network and Internet**
2. Open **Network and Sharing Center**
3. Navigate to **Change advanced sharing settings**
4. Turn on **Network Discovery** and **File and Printer Sharing** (usually Domain)

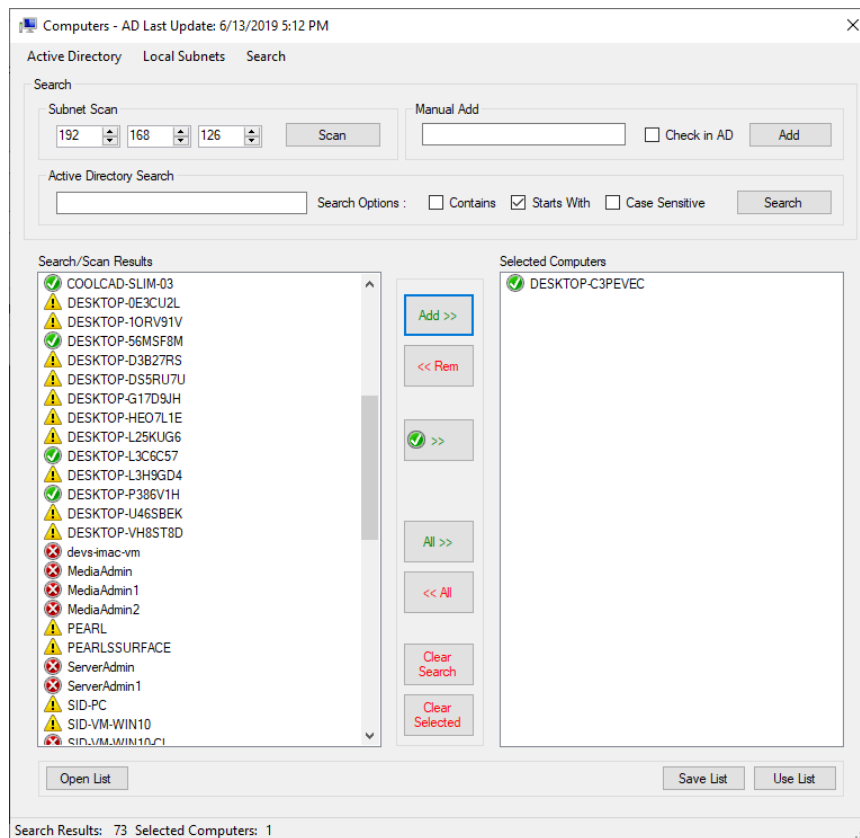


## Using the GateKeeper Deploy Utility:

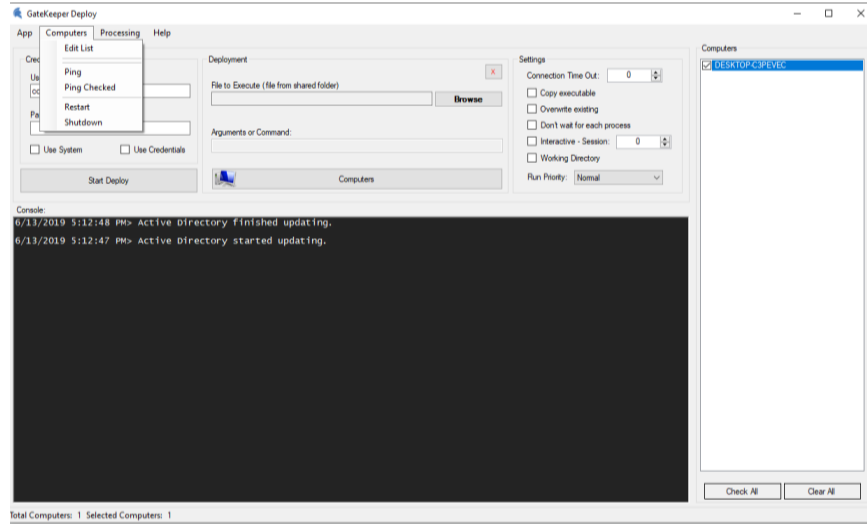
Install the GateKeeper Deploy utility on the computer you will deploy software from. After installation, launch the application.



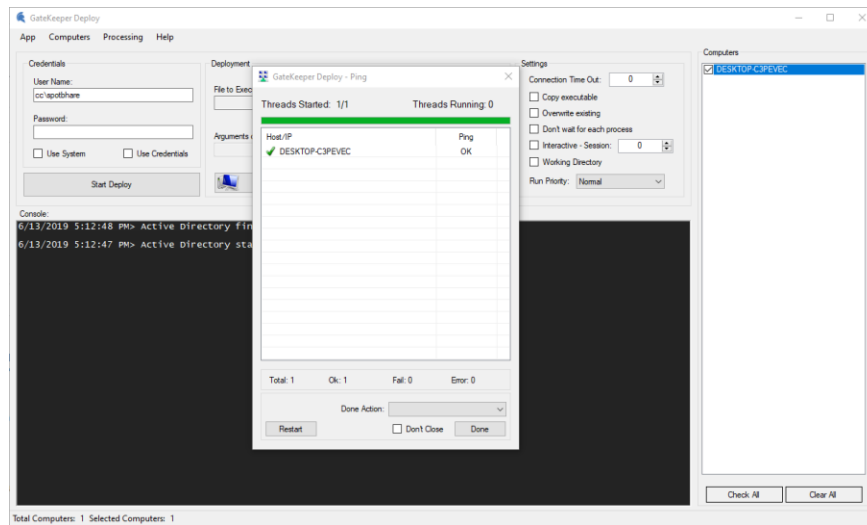
Click the **Computers** button to load the **Computers** menu. From this menu, search for computers on the domain and then select the ones you want to deploy the software to and then click **Use List** to go back to the main screen.



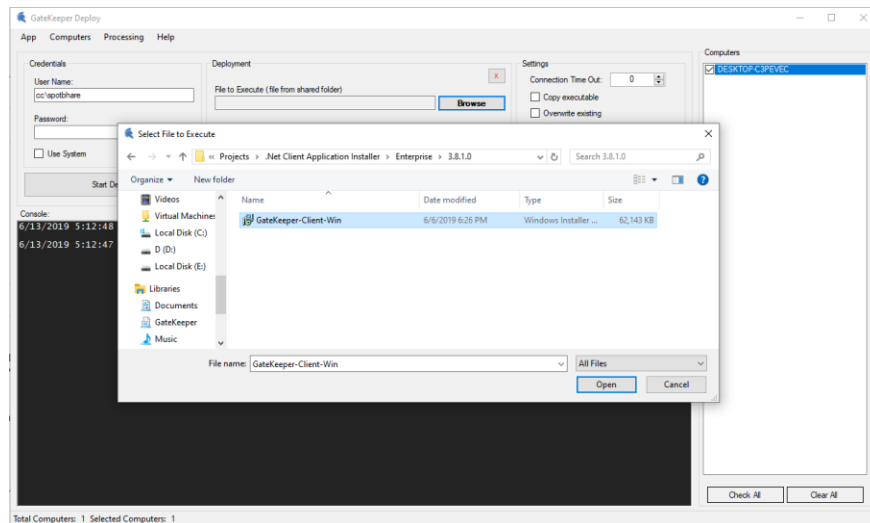
Check the box next to the computers you want to deploy software to and then ping them to make sure they are available.



The ping command will return an "OK" or "FAIL" result for the computers you have selected.

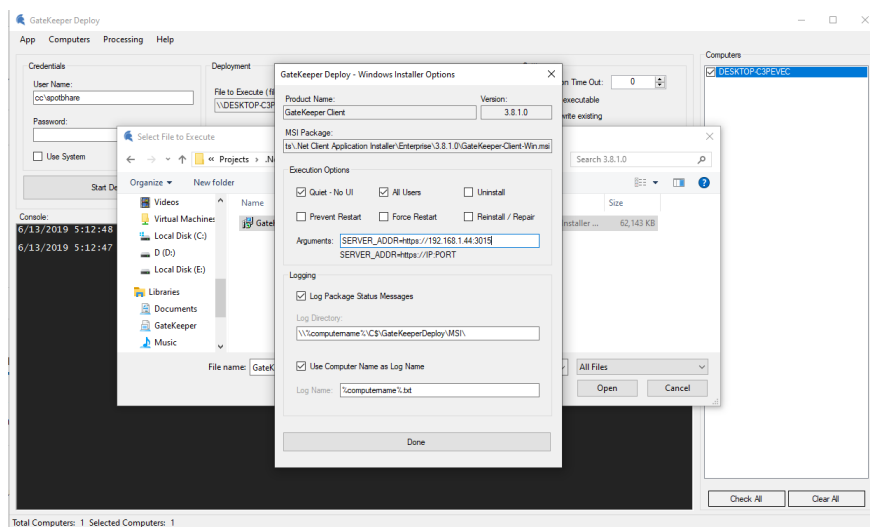


Next, click the **Browse** button to select the MSI file. In this example, we are selecting the **GateKeeper-Client-Win.msi** file from a shared folder on the network. It is important to keep this file in a shared drive that is accessible by all the computers on the network.



Once you choose the MSI file, you can select the various options for the installation. The most recommended option is: **Quiet Installation for All Users**.

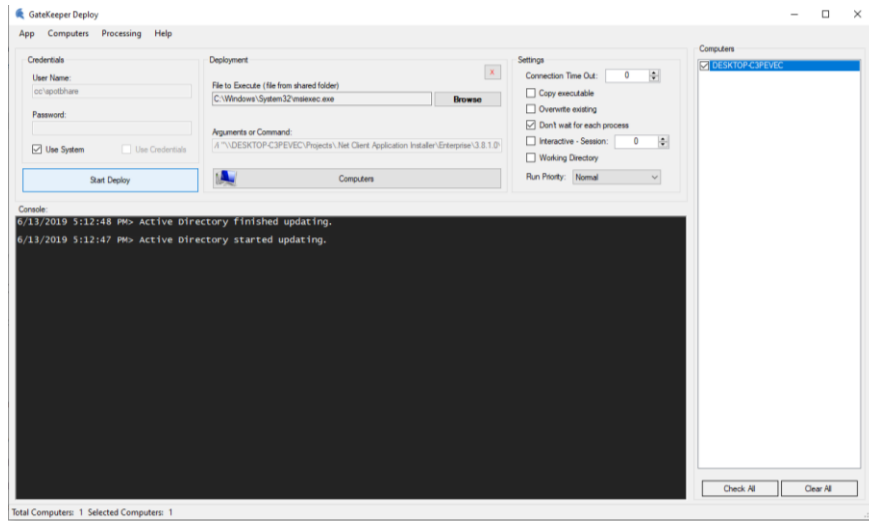
You can also add command line arguments here. For example, for the GateKeeper Client application, you can set the address of the GateKeeper Hub server by typing in **"SERVER\_ADDR=https://<IPAddressOfHub>:<PortNumberOfHub>"**.



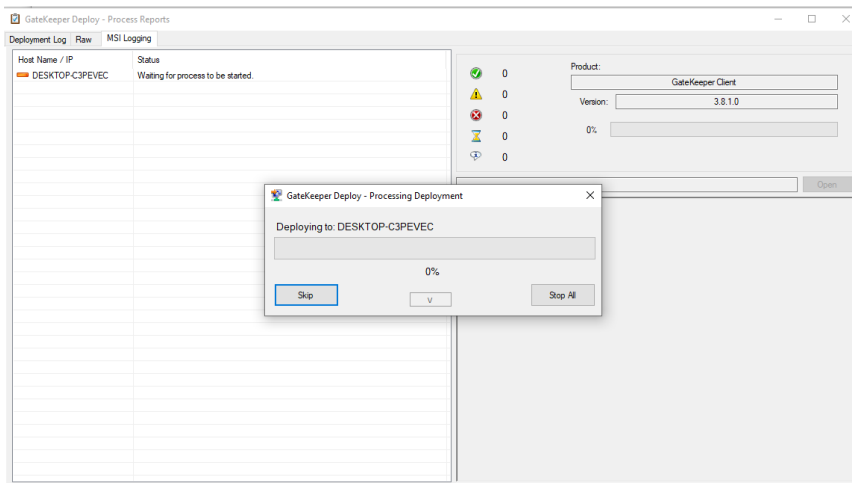
When you have finished selecting the appropriate options, click **Done**.

Next, select the appropriate credentials for deployment. You can either select the **System Account** or you can type in your admin credentials and select **Use Credentials Option**.

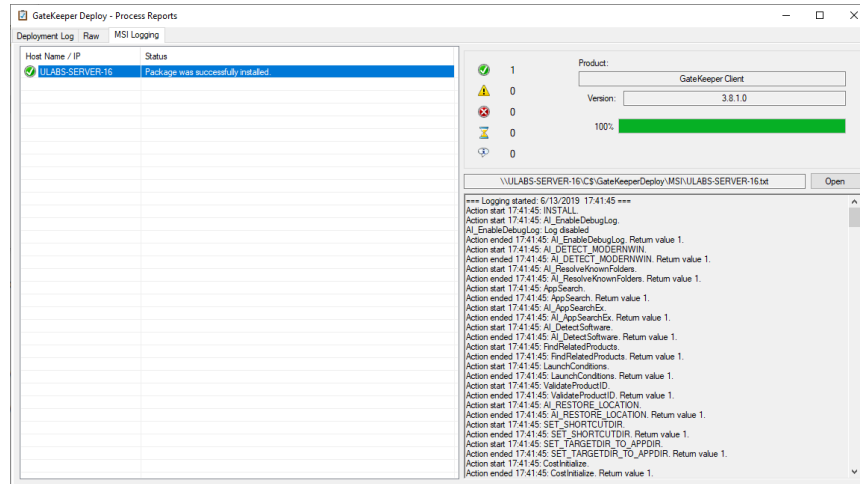
**\*[Important]** In order to use the **System Account** for deployment, make sure you selected the option for **All Users** in the previous menu.



Finally, click **Deploy** to start the deployment process. This will open the deployment status screen where you can monitor progress.



You can see the computers where the PSEXec process is initialized and the status of the progress. Clicking on the Deployment Log, Raw, and MSI Logging tabs shows information on the different stages of the deployment process. Upon successful deployment to all selected computers, the loading bar will reach 100% status in green and the log file will be shown.



Close this screen and return to the main screen - now you can also see the log of the PSEXec commands for each of the computers.

