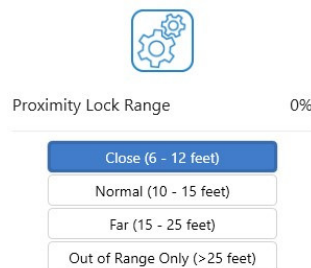


# LOCK RANGE HACK: LOCK FASTER WHEN LEAVING



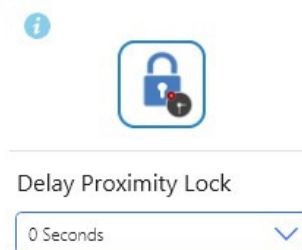
1



PROXIMITY LOCK RANGE to:  
**"Close (6 - 12 feet)"**

Great for small environments where you want to lock the PC ASAP.

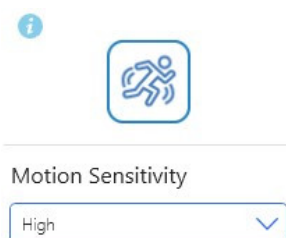
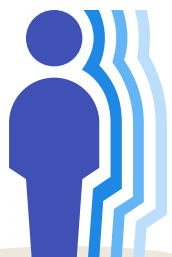
2



Set DELAY PROXIMITY LOCK to: **"0 Seconds"**

Set the computer to lock instantly when your token is out of range.

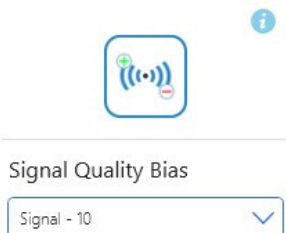
3



Set MOTION SENSITIVITY to: **"HIGH"**

Lets the system know you're leaving and the PC will lock quicker.

4



Set SIGNAL QUALITY BIAS level to: **"-10"**

This makes it so that the token seems farther more quickly, resulting in a faster lock.